

SERVICES AND CAPABILITIES

Technology and Management Consulting



RSM overview

Fifth largest audit, tax and consulting firm in the U.S.

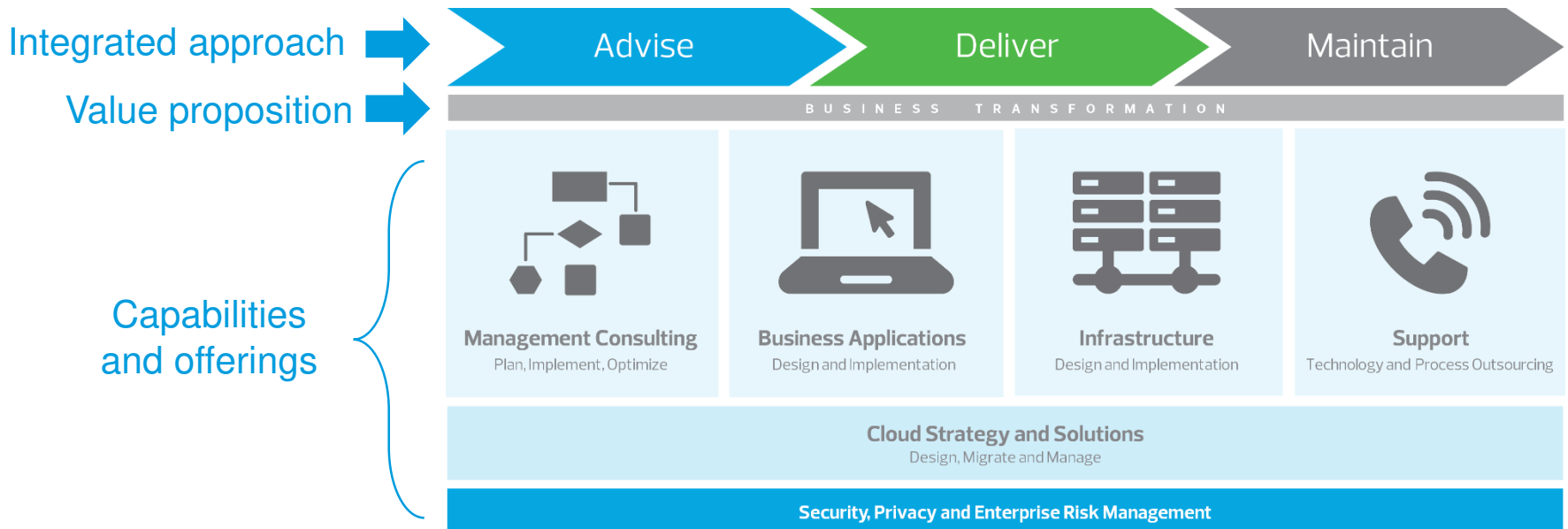
- Over \$1.6 billion in revenue
- 80 cities and more than 8,000 employees in the United States
- Internationally*
 - Presence in more than 110 countries
 - More than 37,000 people in over 740 offices
 - \$4.4 billion (U.S.) in worldwide revenues

** RSM US LLP is a limited liability partnership and the U.S. member firm of RSM International, a global network of independent audit, tax and consulting firms. The member firms of RSM International collaborate to provide services to global clients, but are separate and distinct legal entities that cannot obligate each other. Each member firm is responsible only for its own acts and omissions, and not those of any other party. Visit rsmus.com/aboutus for more information regarding RSM US LLP and RSM International.*



An integrated approach to technology and management consulting

Technology must work for you in the context of business value. Our integrated approach of **advise, deliver and maintain** provides the framework for achieving business results.



An intimate understanding of how people, process and technology intersect, coupled with a disciplined and detailed delivery approach, makes the right solutions work for your organization.

Technology and management consulting capabilities

We offer a comprehensive scope of technology services, covering IT strategy, application and systems integration, infrastructure and outsourcing.



Technology and management consulting

OPTIMIZE YOUR TECHNOLOGY PERFORMANCE WITH INITIATIVES THAT ALIGN PEOPLE, PROCESSES AND TECHNOLOGY TO ENABLE YOUR ORGANIZATION'S BUSINESS STRATEGY.

- *Rapid Assessment*[®]
 - Organization, application, infrastructure, risk, outsourcing
- Technology strategy and roadmap development
 - IT Transformation (Business process, data flow analysis)
 - Benchmarking/best practices
- Technology due diligence
 - Experience with M&A, private equity, carve out
- System selection
- Post-merger integration
- Project and program management
- ERP optimization
- Microsoft platform optimization

Is technology enabling you to achieve your business objectives?

Enterprise resource planning (ERP)

IDENTIFY AND IMPLEMENT THE CORRECT ERP AND BUSINESS PROCESS SOFTWARE SOLUTIONS FOR YOUR BUSINESS NEEDS.

Our consultants go beyond implementing new software—we offer a broader business perspective to ensure your technology investment is wisely spent.

- Centralizing your organization's data
- Automating operational processes
- Streamlining complex reporting
- Integration with suppliers and customers

The objective is overall performance improvement so you can compete in today's local, national global marketplace.

National strategic partners



Specialty partners



Microsoft Partner

Gold Midmarket Solution Provider
Gold Enterprise Resource Planning
Gold Cloud Productivity
Gold Customer Relationship Management
Silver Small and Midmarket Cloud Solutions

2015
INNER CIRCLE
for Microsoft Dynamics



Customer relationship management (CRM)

FOCUS YOUR CUSTOMER RELATIONSHIP MANAGEMENT CAPABILITY TO ATTRACT CUSTOMERS AND INCREASE SALES.

- CRM solutions range from basic "out of the box" models to a complex architectures featuring automation, dashboards, system integration and custom development.
- We integrate CRM with the entire Microsoft Dynamics suite as well as other business systems
- Consultants average 15+ years of CRM experience and bring expertise from various industry backgrounds.

Microsoft Partner

Gold Midmarket Solution Provider
Gold Enterprise Resource Planning
Gold Cloud Productivity
Gold Customer Relationship Management
Silver Small and Midmarket Cloud Solutions

2015
INNER CIRCLE
for Microsoft Dynamics

Attract prospects
Drive your pipeline with breakthrough marketing campaigns.

Amplify Sales
Focus on the right opportunities to help close deals faster and exceed your goals.

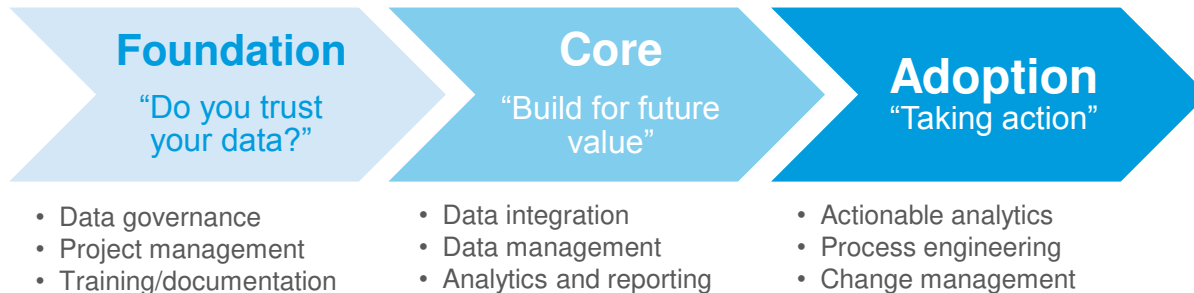
Delight customers
Deliver timely, relevant and personal service across all channels.

Business intelligence

PRIOR TO THE ABILITY TO GAIN THE INSIGHT REQUIRED TO TAKE ACTION, A CORE SET OF APPLICATIONS AND CAPABILITIES MUST BE BUILT ON A SOLID FOUNDATION OF DATA GOVERNANCE.

- Business intelligence/analytics assessment
- Corporate performance management
 - Planning, forecasting, consolidations and budgeting systems
- Dashboards, scorecards and analytics systems

The business intelligence journey



The complete business intelligence journey transforms data into information into action.

Strategic partners



Systems integration

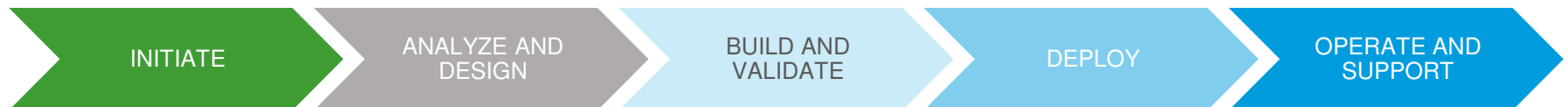
ENHANCE YOUR SYSTEM AND INTEGRATE IT WITHIN YOUR ENVIRONMENT USING OUR APPLICATION AND INFRASTRUCTURE SYSTEMS INTEGRATION CAPABILITIES.

Strategic offerings

- Custom application development and system integration
- Systems optimization and performance engineering
- Upgrades
- Mobile application development
- Identify and access management
- Knowledge management, portals and collaboration systems
 - Microsoft SharePoint

Approach

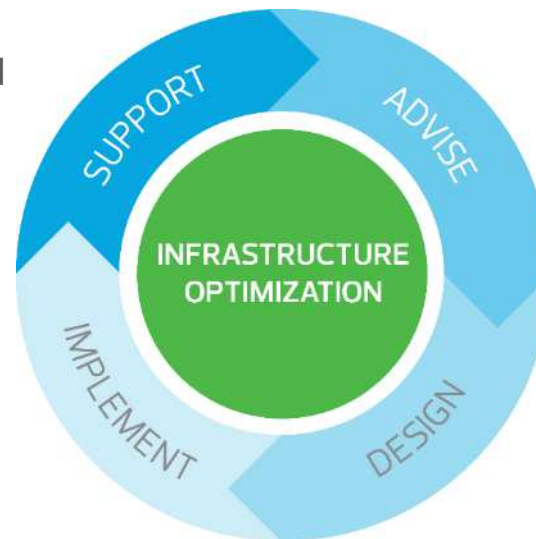
- Standard methodology
 - Initiate, analyze and design, build and validate, deploy, operate and support
- Experienced and certified resources
- Strong industry relevance
- Formal strategic partnerships and alliances with key technology vendors



Infrastructure

TECHNOLOGY INFRASTRUCTURE MUST HELP IMPROVE PERFORMANCE AND SUPPORT STRATEGIC GOALS AND OBJECTIVES.

- Network design, implementation and support (LAN/WAN)
- Carrier Assessment/TEM
- Telecom and voice
- Server virtualization
- Storage and backup
- Desktop/application delivery
- Unified communications and mobile computing



Strategic partners

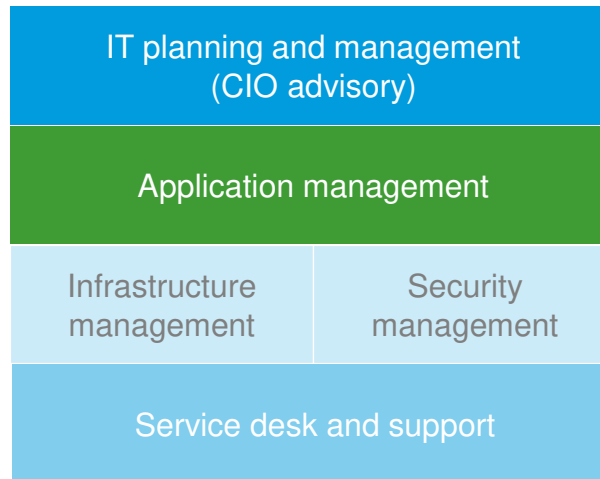


Our professionals optimize your infrastructure to support your business with new environments, migrations from legacy platforms and transformations of your current capabilities.

Infrastructure outsourcing/managed services

WHAT TECHNOLOGY FUNCTIONS CAN YOU REASONABLY AND COST EFFECTIVELY OUTSOURCE AND WHICH STRATEGIC FUNCTIONS NEED TO BE RETAINED?

- CIO advisory
- Infrastructure monitoring
- Maintenance and enhancement
- Network, server & storage
- Data backup
- Data center and hosting
- Service desk and end user support



We customize, implement, and monitor for a technology infrastructure solution that is tailored to your needs.

RSM IT-VisionSM
is backed up by deep knowledge from our strategy, application, infrastructure and security professionals.

Business process outsourcing

FOCUS ON YOUR CORE BUSINESS—LET RSM DELIVER A COMPREHENSIVE FINANCE & ACCOUNTING SOLUTION FOR YOU.

- General accounting
- Reporting and analytics
- Payroll management
- Tax administration
- Budgeting and forecasting
- Purchase to pay
- Billing/invoicing and case application
- Technology platform services

Strategic partners

Web-based management with leading SaaS tools



Make effective business decisions based on real-time data by leveraging RSM's BPO platforms

Cloud computing

**COST SAVINGS? SHORTER INNOVATION LEAD TIME?
FREEDOM TO FOCUS? ARE CLOUD COMPUTING
SOLUTIONS RIGHT FOR YOU BUSINESS NEEDS?**

- Cloud strategy and roadmap
- Cloud business case
- Evaluation and implementation support
 - Software as a Service (SaaS)
 - Platform as a Service (PaaS)
 - Infrastructure as a Service (IaaS)

Cloud Roadmap *Rapid Assessment*[®] Approach

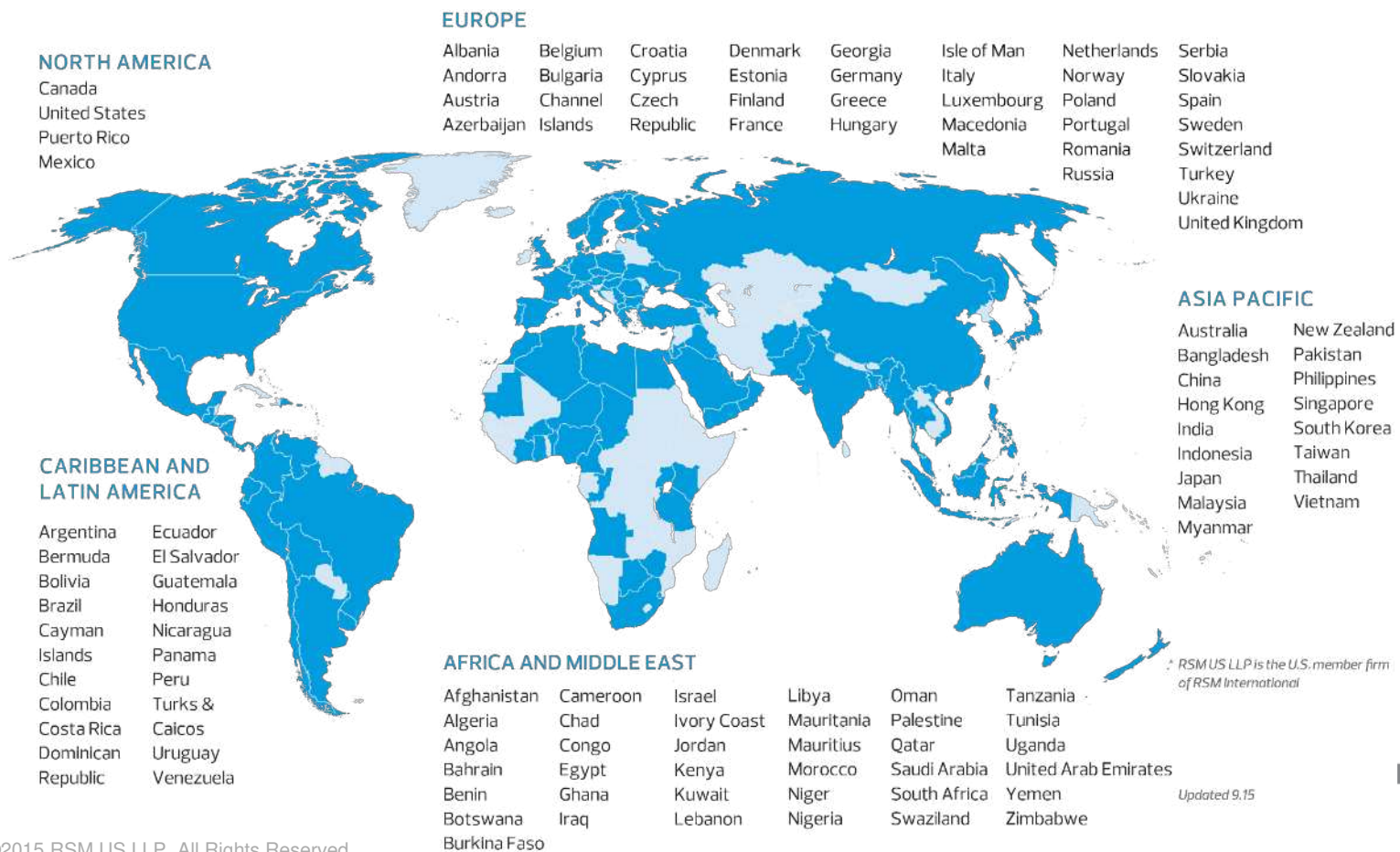



Your focused evaluation is geared toward the discovery of opportunities to simplify operations by leveraging cloud computing so you can focus on your core business.

Our approach to cloud covers strategy, application, infrastructure and outsourcing, including hosting and private cloud.

Serving our clients' global needs

RSM can satisfy clients' growing global needs through their membership with RSM International (RSMI). With RSMI, we are one of the largest professional services firms, in more than 110 countries with over 37,500 employees in nearly 700 offices.





THE POWER
OF BEING
UNDERSTOOD.
THIS IS RSM.

- We bring an unmatched client-centric focus to every engagement
- We create rich, enduring relationships based on a profound understanding of our clients—their business challenges and their aspirations
- Armed with an understanding of our clients, we bring fresh insights and tailored solutions to help them succeed

RSM US LLP

+1 800 274 3978

www.rsmus.com

This document contains general information, may be based on authorities that are subject to change, and is not a substitute for professional advice or services. This document does not constitute audit, tax, consulting, business, financial, investment, legal or other professional advice, and you should consult a qualified professional advisor before taking any action based on the information herein. RSM US LLP, its affiliates and related entities are not responsible for any loss resulting from or relating to reliance on this document by any person.

RSM US LLP is a limited liability partnership and the U.S. member firm of RSM International, a global network of independent audit, tax and consulting firms. The member firms of RSM International collaborate to provide services to global clients, but are separate and distinct legal entities that cannot obligate each other. Each member firm is responsible only for its own acts and omissions, and not those of any other party. Visit rsmus.com/aboutus for more information regarding RSM US LLP and RSM International.

RSM® and the RSM logo are registered trademarks of RSM International Association. The power of being understood® is a registered trademark of RSM US LLP.

© 2015 RSM US LLP. All Rights Reserved.